

MV Amaltal Columbia deep sea factory trawler, ISO 9002 certified.

## Amaltal - Leading in fishing Technology.

Amaltal was established in 1982, in New Zealand's fishing capital of Nelson, as a joint venture between Amalgamated Marketing Ltd of Auckland and Talley's Fisheries Ltd of Motueka. Amaltal brought together Amalgamated Marketing's export marketing expertise and Talley's Fisheries' fishing and fish processing resources to create what has now become New Zealand's third largest fishing company.

### Utilising a Renewable Natural Resource

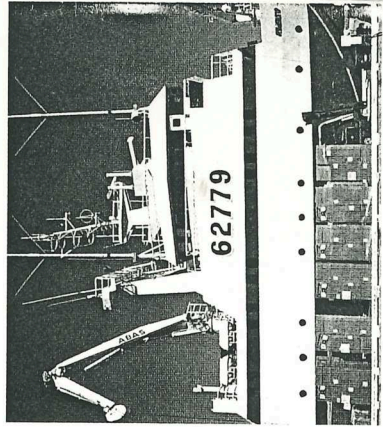
Amaltal controls fishing quotas totalling 72,659 tonnes, or 12.7% of New Zealand's Total Allowable Commercial Catch. The quotas are predominantly for deep water species caught in the crystal pure subantarctic waters of New Zealand's 200 mile Exclusive Economic Zone. The major species fished are: Hoki, Orange Roughy,

Oreo Dory, Squid, Ling, Hake and Southern Blue Whiting.

Commitment to greater levels of New Zealand involvement in harvesting and processing the nation's fisheries, has seen Amaltal increase the portion of company caught quotas to as much as 60% in recent years, while foreign joint venture vessel charters are used to catch the balance on a seasonal basis.

### Leading in Fishing Technology

Amaltal's fleet presently consists of three freezer trawlers (which have full Ministry of Agriculture and Fisheries packhouse licences) and one fresh fish trawler. The freezer trawlers fully process the catch onboard to customers' specifications, into frozen-at-sea fillet, block or head and gutted form. The 60 metre Amaltal Endeavour processes up to 30 tonnes of prepackaged fillet per



Unloading processed fish for distribution.

day for direct shipment to international markets, and has a storage capacity of 600 tonnes.

The 65 metre Amaltal Explorer was the first purpose built freezer trawler for New Zealand's deep water fishery, and has caught a New Zealand domestic trawler record of 13,800 tonnes in one year. The flag ship of the fleet, the 64 metre Amaltal Columbia, leads the world in fishing technology. The

RF NELSON - INDUSTRY

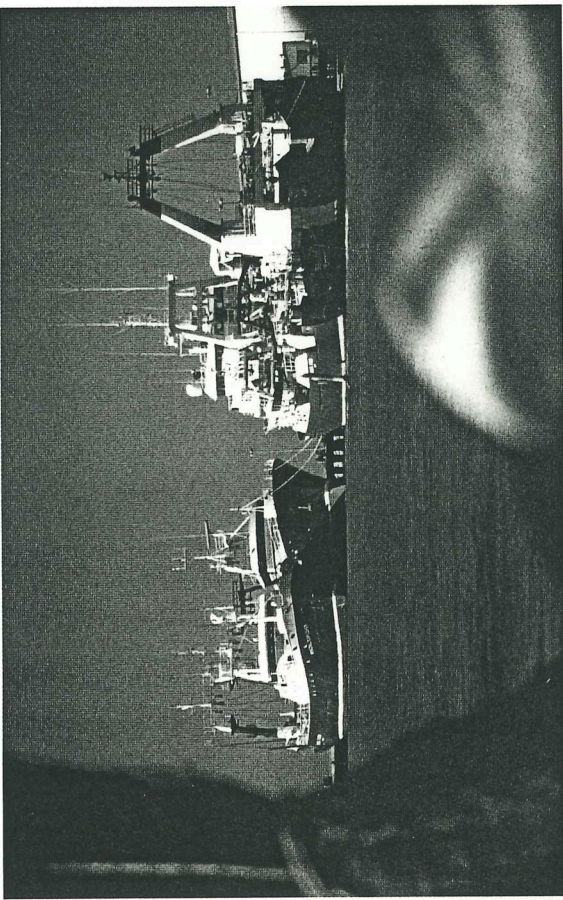
# AMALTAL

## FISHING COMPANY LIMITED

Contact address:  
Maitai Wharf, Port Nelson  
PO Box 7064, Nelson  
New Zealand  
Telephone: +64-3-548 0109  
Fax: +64-3-548 2695 Telex: NZ 3312

12 AUG 1996

Reference Only



The Amaltal fishing fleet.

ship was the world's first factory freezer trawler to be registered with ISO 9002 certification, an internationally recognised standard which assures customers of consistent high product quality. This ship has extensive capabilities to process all waste products for recycling or non-polluting disposal. Even the ship's boilers are able to run on waste fish oil. Thus the Amaltal Columbia can correctly be described as environmentally friendly.

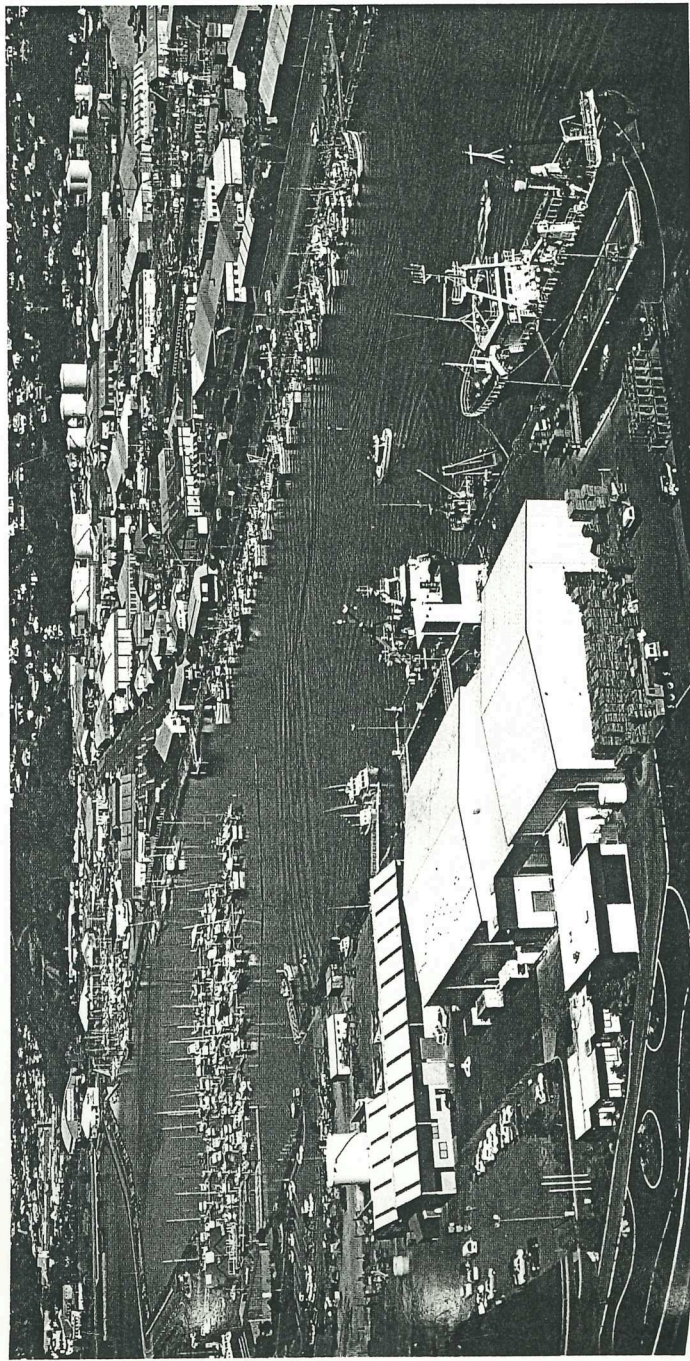
### Full Support Services

Amaltal's fishing fleet is supported by its shore based facilities at Port Nelson, which feature the 125 metre Maitai Wharf with its seven metre berth depth, a 4,500 tonne cool store and 600,000 litres of fuel tank capacity. The Port Nelson installation provides 24 hour unloading as well as full servicing, engineering and supply facilities

not only to Amaltal's own fleet, but also to other participants in the fishing industry.

### Committed to Nelson

Amaltal has become strategically important to the Nelson region by providing employment for 180 seagoing crew and 20 shore based staff. Amaltal contributes in excess of eight million dollars in salary and wages to Nelson's economy and uses predominantly local contractors and suppliers to supplement the company's vessel servicing activities.



Amaltal's shore based facilities in Nelson, offering full support services.

Spotlight on South Island New Zealand. - Spotlight Communications, 1996